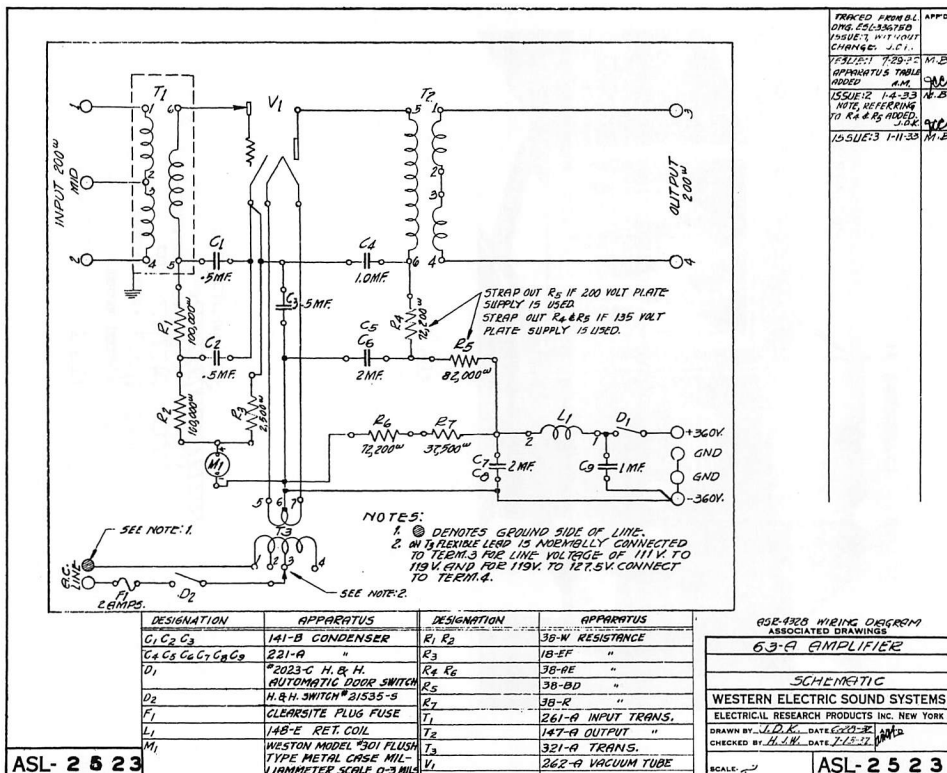


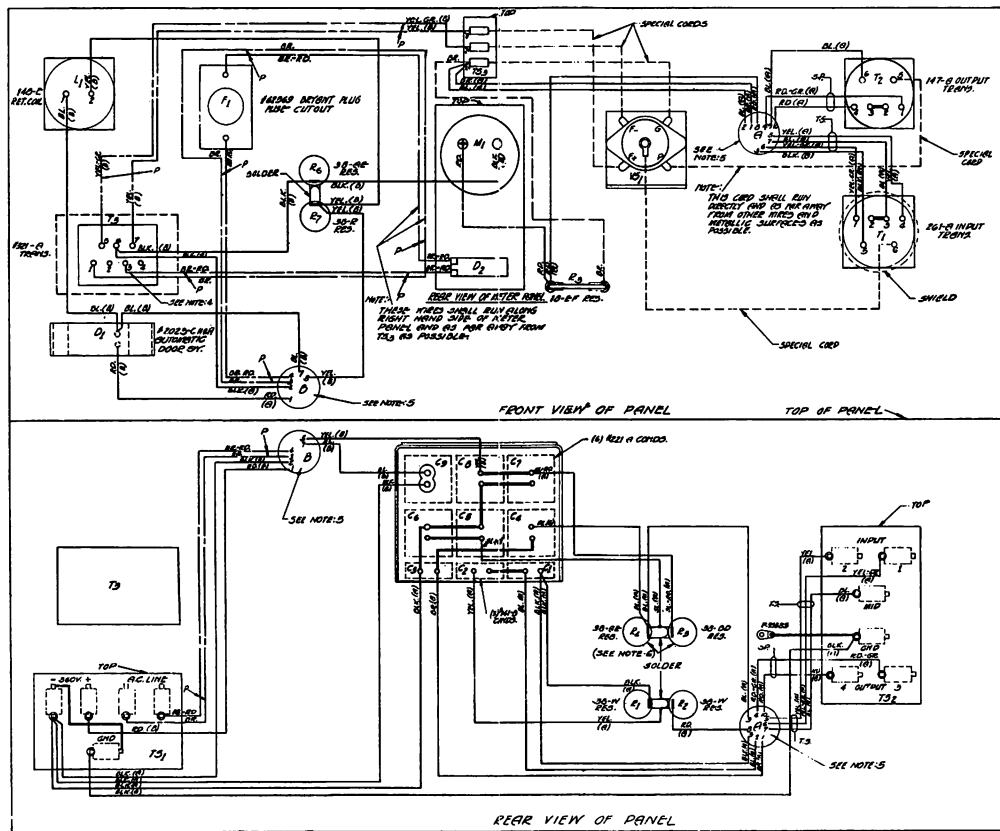


**WIDE RANGE**  
Western Electric  
SOUND SYSTEM

4.03  
ASL-2523-3 Assoc. with AMPLIFIERS, 63 TYPE



3.03  
 48-1328-2 ASSY. WITH AMPLIFIERS, 6) TYPE



NOTES:

1. ALL D.B.E. WIRE IS PER A-304001  
 WIRE GAUGE THIS ARE STRIPS PER A-16997  
 #20 B.N.G. D.B.E. WIRE (IN CABLE)  
 #16 (WIRE FORWARD)  
 #18 (IN CABLE)
2. WIRE #16 (A) OR (B) DENOTE IN WHICH CABLE THEY ARE RUN.  
 #16 DENOTES SHIELDED PAIR, SHIELDED PER K5-1585.  
 #18 DENOTES SHIELDED TRIPLE SHIELDED PER K5-1635.  
 #20 DENOTES SHIELDED TRIPLE SHIELDED PER K5-1635.
3. CONNECT ALL SHIELDS TO A COMMON GROUND.
4. ON T<sub>1</sub> FLEXIBLE LEAD IS NORMALLY CONNECTED TO TERMINAL FOR LINE VOLTAGE OF 110V TO 115V FOR RES. TO 110V. CONNECT TO TERMINAL AND FOR 100V TO 105V. CONNECT TO TERMINAL.
5. (A) & (B) ARE HOLES IN PANEL. WIRES IN EITHER FRONT OR REAR VIEW ENDINGS AT A HOLE THIS ARE CONTINUED IN THE OTHER VIEW AT THE CORRESPONDING HOLE & WIRE.
6. STRAP OUT #5 IF 200 VOLT PLATE SUPPLY IS USED. STRAP OUT #4 & #5 IF 125 VOLT PLATE SUPPLY IS USED.

ASR-4 3 28  
 63-A  
 WIRING DIAGRAM  
 WESTERN ELECTRIC SOUND SYSTEMS  
 ELECTRICAL RESEARCH PRODUCTS INC. NEW YORK  
 DRAWN BY: J.L.R. DATE: 12-22-52  
 CHECKED BY: J.L.R. DATE: 1-1-53  
 ASR-4 3 28

NO. 59 TYPE AMPLIFIER

